

INDUSTRIAL CONVEYOR SOLUTION



PRODUCT PROFILE

Rubbex Conveyors belt repair division is providing Belt splicing solutions with various belt repair techniques.

All our belt repairing materials are manufactured after intense research and development by our experienced technologists.

We are leading suppliers of belt repair material in the Global Market.

Currently we are serving in more than 8 countries and are targeting to extend in many more by next year fiscal end.



CONTENT

Cold Vulcanizing System	2
Hot Vulcanizing System	5
Conveyor Cleaning System	9
Conveyor Buffer System	11
Belt Mechanical Joint System	15
Conveyor Belt Tools	17

Cold Vulcanizing Cement SK3130

Cold vulcanizing cement is recommended for conveyor belt splicing and repairing. Non-flammable, used on bonding rubber to rubber, rubber to metal, rubber to fabric, fabric to fabric. For the application of conveyor belt repair, pulley lagging, drum lining, etc.

Order No.	Product Name	Weight(kg)
3610101	Cold vulcanizing cement SK313	1
3610505	Cold vulcanizing cement SK316	1
3610303	Cold vulcanizing cement SK318	1



RUBBEX SK3130

Metal Primer SK3630

Metal primer SK363 is used for pre-treatment of metal surface, which will improve the bonding effect between rubber and metal.

Order No.	Product Name	Volume(ml)
3630101	Metal primer SK363	700



RUBBEX SK3630

Cleaning Solvent SK3531

Cleaning solvent SK353 is used for cleaning rubber and metal surface, removing oil and dirt residual from surface, to increase the bonding strength.

Order No.	Product Name	Weight(kg)
3621010	Cleaning solvent SK353	1
3621010	Cleaning solvent SK353	6



RUBBEX SK3531

Repair Strip

Used for repair of conveyor belt longitudinal cuts, with CN bonding layer.

Order No.	Product Name	Dimension(mm)
3111310	Standard repair strip	2.2*100*10000
3111315	Standard repair strip	3.2*150*10000
3111322	Standard repair strip	3.2*220*10000
3111330	Standard repair strip	3.4*300*10000
3111340	Standard repair strip	3.4*400*10000
3111410	Fabric reinforced repair strip	3.6*100*10000
3111415	Fabric reinforced repair strip	4.6*150*10000
3111422	Fabric reinforced repair strip	4.6*220*10000
3111430	Fabric reinforced repair strip	4.8*300*10000
3111440	Fabric reinforced repair strip	4.8*400*10000



Repair Patch

Used for repair of puncture or gouge damage, with CN bonding layer.

Order No.	Product Name	Dimension(mm)
3111113	Standard repair patch	2.4*130*160
3111120	Standard repair patch	2.4*200*260
3111127	Standard repair patch	2.4*270*360
3111213	Fabric reinforced repair patch	3.8*130*160
3111220	Fabric reinforced repair patch	3.8*200*260
3111327	Fabric reinforced repair patch	3.8*270*360



Rubber Repair Rebuilder Group

SK358 group including a rebuilder, a primer and a hardener, very easy to operate. It is non-flammable and can dry under room temperature. It is convenient to repair damage on conveyor belt surface, and also very useful to fill in the gap between pulley lagging cover rubber.

Order No.	Product Name	Weight(g)
3623100	Re-builder gel	100
3623150	Re-builder gel	150
3623538	Re-builder gel	300
3623500	Re-builder gel	500



RUBBEX SK 3589

Uncured Tie Gum (for fabric conveyor belt)

Suitable for conveyor belt hot vulcanization. 10kg/roll.

Order No.	Product Name	Dimension(mm)
8111888	Uncured tie gum	0.8*500
8111801	Uncured tie gum	1*500
8111802	Uncured tie gum	2*500
8111803	Uncured tie gum	3*500



Further dimensions on demand.

Uncured Cover Rubber (for fabric conveyor belt)

Suitable for conveyor belt hot vulcanization. 10kg/roll.

Order No.	Product Name	Dimension(mm)
8111902	Uncured cover rubber	2*500
8111903	Uncured cover rubber	3*500
8111904	Uncured cover rubber	4*500
8111905	Uncured cover rubber	5*500



Further dimensions on demand.

Hot Vulcanizing Cement SK8130

Non-flammable, used for fabric conveyor belt hot vulcanization.

Order No.	Product Name	Weight(kg)
8111805	Hot vulcanizing cement SK813	1



RUBBEX SK8130

Uncured Tie Gum (for steel cord conveyor belt)

Suitable for conveyor belt hot vulcanization. 10kg/roll.

Order No.	Product Name	Dimension(mm)
8111812	Uncured tie gum	2*500
8111813	Uncured tie gum	3*500
8111814	Uncured tie gum	4*500
8111815	Uncured tie gum	5*500



Uncured Cover Rubber (for steel cord conveyor belt)

Suitable for conveyor belt hot vulcanization. 10kg/roll.

Order No.	Product Name	Dimension(mm)
8111912	Uncured cover rubber	2*500
8111913	Uncured cover rubber	3*500
8111914	Uncured cover rubber	4*500
8111915	Uncured cover rubber	5*500
8111916	Uncured cover rubber	6*500



Hot Vulcanizing Cement SK8230

Used for steel cord conveyor belt vulcanization.

Order No.	Product Name	Weight (kg)
8111807	Hot vulcanizing cement SK823	1



RUBBEX SK8230

PVC/PVG Uncured Cover Rubber

Suitable for conveyor belt hot vulcanization. 10kg/roll.

Order No.	Product Name	Dimension(mm)
8111822	PVC/PVG uncured rubber	2*500
8111824	PVC/PVG uncured rubber	4*500



Hot Vulcanizing Cement SK8330

Used for PVC/PVG conveyor belt hot vulcanization.

Order No.	Product Name	Weight(kg)
8111825	Hot vulcanizing cement SK833	1



RUBBEX SK8330

Hot Vulcanizing Powder SK8581

Used for repairing puncture or gouge damage. Even penetrated part can be repaired. Dry quickly in several minutes.

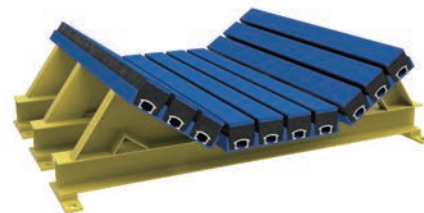
Order No.	Product Name	Weight (g)
8111835	Hot vulcanizing powder SK858	400
8111836	Hot vulcanizing powder SK858	2500



RUBBEX SK8581

Impact Bed

Impact bed is installed under the conveyor belt loading points, thus, impact bars consist of three different parts, wear resistant and low friction UHMW-PE sheet, high-elasticity rubber, aluminium T-bolt fastening system. Apart from this combination, all - PU type also popular under easy wear working situation.

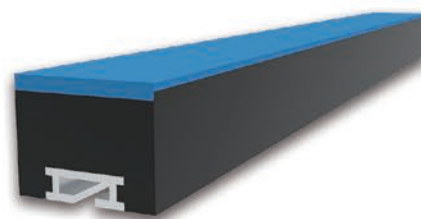


Belt Width	Impact Bar Setting					Conveyor Roller Width
	Impact Bar Number			Bar Spacing		
	Left	Middle	Right	Sides	Middle	
550	1	2	1	50	0	200
650	2	2	2	25	25	250
800	2	3	2	50	5	315
1000	3	3	3	25	25	380
1200	3	4	3	55	20	465
1400	4	5	4	45	7	530
1600	5	5	5	25	25	600
1800	5	6	5	10	10	670

Further dimensions on demand.

Impact Bar

Order No	Length (mm)	Width (mm)	Thickness (mm)	UHMWPE Layer (mm)
RIT-IB-600	600	100	50 75 100	12.5
RIT-IB-700	700			
RIT-IB-750	750			
RIT-IB-800	800			
RIT-IB-900	900			
RIT-IB-1000	1000			
RIT-IB-1220	1220			
RIT-IB-1400	1400			



Further dimensions on demand.

Skirt Rubber

Skirt rubber is designed according to transport materials and structure of conveyor chute. It can fundamentally solved the problems such as material spraying, air leakage and dust raising on two sides of guide chutes. We usually produce all rubber, rubber plus PU and all PU material. Shapes including Y, I, F, Sandwich shape to meet different working environment.

Order No.	Product Name	Dimension(mm)
3521100	Skirt rubber	10/15/20/25*100*10000
3521150	Skirt rubber	10/15/20/25*150*10000
3521200	Skirt rubber	10/15/20/25*200*10000
3521250	Skirt rubber	10/15/20/25*250*10000
3521300	Skirt rubber	10/15/20/25*300*10000



Further dimensions on demand.

Nature Rubber Skirting

The nature rubber skirting with high elasticity, soft and wear abrasive advantages, very good at making rubber skirting. When stop the material spread out, it can also protect the conveyor belt well. The specification, size and color both can be customized.

Color	OEM	
Polymer	DIN ISO 1629	NR
Hardness	DIN ISO	51Shore A
Abrasion	DIN ISO	160 mm ³
Specific Weight	DIN EN ISO 1183-1	1.11g/cm ³ (69.30 lb/ft ³)
Tensile strength	DIN 53 504	25N/mm ²
Elongation At Break	DIN 53 504	600%
Resilience Elasticity	DIN 53 512	70%
Tear Growth Resistance	ISO 34-1 Method A	11N/mm



Further dimensions on demand.

Belt Fastener

Belt fastener is a mechanical belt joint and rapidly connect the break part of the conveyor belt or two joints. It is made by galvanized steel so with good anti-corrosion and strength. It can be easily operated by the matched wrench tools. Just one person can finish installment so very convenient.

Order No.	Product Name	Belt Thickness(mm)
RIT-BF-140	Belt fastener 140#	5-11
RIT-BF-190	Belt fastener 190#	8-14
RIT-BF-112	Belt fastener 1.1/2"	11-17
RIT-BF-002	Belt fastener 2"	14-21
RIT-BF-212	Belt fastener 2.1/2"	19-25
RIT-BF-003	Belt fastener 3"	20-25



Belt Fastener Wrench Tool Kits

4 tools can be used to drill hole, install screw and break the beyond longer bolts. They are a group with different size for the exact fastener size.

Order No.	Fastener Model(mm)
RIT-BFT-140	Belt fastener 140#
RIT-BFT-190	Belt fastener 190#
RIT-BFT-112	Belt fastener 1.1/2"
RIT-BFT-002	Belt fastener 2"
RIT-BFT-212	Belt fastener 2.1/2"
RIT-BFT-003	Belt fastener 3"



Mechanical Joint

Mechanical joint made by rubber, EPDM and accessories. Just use a screw driver can install it. All bolts will be even with the belt surface and matched well with the belt. Running very fluently and can withstand different temperature.

Order No.	Product Name	Dimension(mm)
RIT-MJ-010	Standart tilt mechanicle joint	12*200*10000
RIT-MJ-020	Standart straight mechanicle joint	15*300*10000
RIT-MJ-030	Standart pre-bury mechanicle joint	15*254*10000
RIT-MJ-040	High strength pre-Bury mechanicle joint	18*350*10000



Rivet Lacing

Rivet lacing system consist by two sides of lacing, one pin and matched rivet. It like a zipper can well and tightly connect two joints of the belt. And it is also convenient so that can be finished by one person with the installed machine. Belt can be smooth after use it and running well.



Order No.	Product Name	Fastener Model(mm)
RIT-RL-10	Rivet lacing R2	5-10
RIT-RL-15	Rivet lacing R5	6-12
RIT-RL-15	Rivet lacing R5-1/2	10-15
RIT-RL-18	Rivet lacing R6	14-18

Length as belt size.

Rivet Lacing Joint Installment Machine.

Rivet lacing joint installment machine.

Used to install the bolts on the belt rivet lacing system. Suitable for any size of rivet lacing size. Width can be made as your belt width.



Order No.	Product Name	Belt Width(mm)
RIT-RL-800	Installment tools	800
RIT-RL-1000	Installment tools	1000
RIT-RL-1200	Installment tools	1200
RIT-RL-1400	Installment tools	1400
RIT-RL-1600	Installment tools	1600
RIT-RL-1800	Installment tools	1800

Belt Laminating Machine

Made by steel, can be used to laminating the conveyor belt to suitable thickness so that can install the belt fastener or joint. Use it to change the belt thickness so after install the joint, the belt still even with the whole surface.





Tire Regroover



Regroover Blade



Angle Grinder



Rubber Stripper



Vice Grip



Porcupine Roller



Flat Roller



Hawk Ply Knife



Ply Lifter



Iron Brander



Iron Brander



Extruder Gun



Double Acting Roller



Ply Knife Spare Blade



Adjustable Ply Knife



Offset Knife

#5121101



Rubber Knife

#5121102



Don Carlos Knife

#5121103



Don Carlos Spare Blade

#5121104



Multi-Functioning Knife

#5122101



Glue Brush

#5122102



Hand Rasp

#5122103



Hand Rasp Spare Blade

#5122104



Rubber Hammer

#5123101



F Clamp

#5123102



Tungsten Buffing Disc

#5123103



Moon Knife

#5123104



Ply Knife

#5124101



Pincer

#5124102



Steel Brush Roller

#5124103



Sharpening Stone

#5124104



Lnk Box

RBK International Gulf LLC**UNITED ARAB EMIRATES**

 P.O.Box: 124401 20th Floor, Aspin Commercial Tower, Sheikh Zayed Road, Dubai, United Arab Emirates

RBK International (SG) Pte Ltd**SINGAPORE**

 10 Anson Road, #22-02 International Plaza Singapore 079903.

PT RBK International Indonesia**INDONESIA**

 GD Menara Rajawali, Lt Ji. Mega Kuningan Lot 5.1 Kawasan Mega Kuningan Timur Setiabudikakarta, Sekata Jakarta, Indonesia 12950.

RBK International (UK) Ltd**UNITED KINGDOM**

 Kemp House 160 City Road Central London EC1V 2NX.

RBK Industries Limited**INDIA**

 114 Platinum Square Near Hyatt Regent Viman Nagar Pune, Maharashtra India

RBK International (Canada) Ltd.**CANADA**

 517-45th A Street Saskatoon, SK S7K 0W6 Canada.


RBK International Netherlands B.V.**NETHERLANDS**

 Gustav Mahlerplein 2, 1082 MA, Amsterdam The Netherlands

RBK International (Australia) Pty Ltd**AUSTRALIA**

 66 Bermbing Street The Ponds NSW 2769 Sydney, Australia.

RBK International Benin SARL**BENIN**

 Littoral, Cotonou 11th Arrondissement, Gbgamey TF 535, A Maison Yamadjako Immaculee.

For Any Enquires:

OFFICE ADDRESS

KAWASAN MEGA KUNINGAN, KE1. KUNINGAN TIMUR, KEC. SETIABUDI,
KOTA ADM. JAKARTA SELATAN, PROV. DKI JAKARTA

 **+6281283571145**

 **sales@rubbexconveyors.com**